

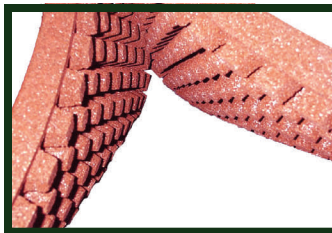
# NO FAULT Safety Tile

## 2' x 2' Playground Safety Tiles

- Indoor or outdoor applications
- Shipped to your site at your convenience according to your schedule
- ASTM & ADA approved
- Unique No Fault 4-Corner Lock is designed for rooftop applications
- Easily Installed



Call Toll-Free  
866-637-7678  
for a CD & samples



### Playground Application For ASTM F1292

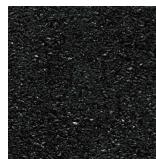
Depth	Fall Height
2.25"	6'
3.75"	8'



#### Company Information:

No Fault Sport Group, LLC  
3112 Valley Creek Drive, Suite C  
Baton Rouge LA 70808  
Phone: 866-637-7678 (toll free)  
Fax: 877-291-3821 (toll free)  
Email: info@nofault.com

#### Available Colors:



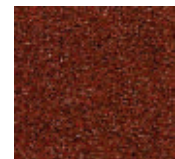
Black



Chrome



Green



Terra Cotta



3112 Valley Creek Drive  
Suite C  
Phone: (225) 215-7760  
Fax: (225) 291-3821  
www.nofault.com

### No Fault Safety Tile SPECIFICATION

**Physical Specification:** No Fault Safety Tile configurations must consist of a high density water permeable surface, tapered conical support legs, surface expansion joint and perimeter adhesion bar (2 1/4" thickness) in order to maximize shock attenuation, walkability, ease of installation, and water drainage.

**Component Specification:** No Fault Safety Tile is a factory molded surface composed of high quality rubber granules bound with a wear and weather resistant polyurethane. The polyurethane binder is composed of MDI (diphenylmethanediisocyanate) isocyanate and polyether (polypropyleneglycol) polyols. TDI (toluene diisocyanate) isocyanate or catalysts based on lead or mercury are not utilized. Rubber granules are blends of ground rubber particulate specially blended to enhance tile strength, durability, and energy absorption characteristics. All coloring pigments are inorganic oxides. Pigments based on cadmium are not utilized.

	<u>2 1/4" Thickness</u>	<u>3 3/4" Thickness</u>
<b>Dimensions (78° F.):</b>	24"x24" ± 1/8"	24"x24" ± 1/8"
<b>Wear Surface Density:</b>	50.0 lbs./cu.ft., min.	48.0 lbs./cu.ft., min.
<b>Coefficient of Thermal Expansion:</b>	1.10x10 <sup>-3</sup> in./ft./°F.	1.10x10 <sup>-3</sup> in./ft./°F.
<b>Void Volume:</b>	42% min.	50% min.
<b>Perimeter Adhesion Bar:</b>	Provides capability for N/A full length edge adhesion. Bar dimensions: 1 1/4" x 24" on all 4 sides	
<b>Weight:</b>	5.43 lbs./sq. ft.	7.58 lbs./sq. ft.

<u>CPSC and ASTM F-1292-99 Critical Height</u>	<u>6'</u>	<u>8'</u>
30°F.	Less than 200 G-max and 1000 HIC.	Less than 200 G-max and 1000 HIC.
72°F.	Less than 200 G-max and 1000 HIC.	Less than 200 G-max and 1000 HIC.
120°F.	Less than 200 G-max and 1000 HIC.	Less than 200 G-max and 1000 HIC.

#### Plant Control Testing

<u>Property</u>	<u>Test Method</u>	<u>Typical Result</u>
Tensile Strength	DIN 18035 Part 6	1.43 N/mm <sup>2</sup>
Elongation at Break	DIN 18035 Part 6	118%

#### Characteristic Testing

<u>Property</u>	<u>Test Method</u>	<u>Typical Result</u>			
Tear Resistance	ASTM D-624, Die C	13.13kN/m			
Abrasion Testing	ASTM D-3389, Taber Abrasion, Method B,	0.20 mg/revolution 2000 cycles, H-22 wheel.			
Coefficient of Friction	DIN 18035 Part 6	<u>New</u>	<u>Aged 42 Days</u>	<u>Lightly Sanded</u>	
		Dry	0.15	0.54	0.55
		Wet	0.23	0.76	0.53
Permeability to Water	DIN 18035 Part 6	0.045 cm/sec			
Accelerated Aging	Xenon Arc, 2000 hrs. DIN 18035 Part 6	105% Tensile Retention 87% Elongation Retention			
Flammability	ASTM D-2859-96 (Burning Pill Test)	8 of 8 Samples Passed			
Fungal Resistance	ASTM G21-96	<u>After 28 Days</u>	<u>After 60 Days</u>		